

CD5 (Mantle Cell Lymphoma Marker) Antibody - With BSA and Azide
Mouse Monoclonal Antibody [Clone SPM546]
Catalog # AH10843**Specification**

CD5 (Mantle Cell Lymphoma Marker) Antibody - With BSA and Azide - Product Information

Application	IHC-P, IF, FC
Primary Accession	P06127
Other Accession	921 , 58685
Reactivity	Human
Host	Mouse
Clonality	Monoclonal
Isotype	Mouse / IgG1, kappa
Calculated MW	67kDa kDa

CD5 (Mantle Cell Lymphoma Marker) Antibody - With BSA and Azide - Additional Information**Gene ID** 921**Other Names**

T-cell surface glycoprotein CD5, Lymphocyte antigen T1/Leu-1, CD5, CD5, LEU1

Application Note

IHC-P~N/A
IF~1:50~200
FC~1:10~50

Format

200ug/ml of Ab purified from Bioreactor Concentrate by Protein A/G. Prepared in 10mM PBS with 0.05% BSA & 0.05% azide. Also available WITHOUT BSA & azide at 1.0mg/ml.

Storage

Store at 2 to 8°C. Antibody is stable for 24 months.

Precautions

CD5 (Mantle Cell Lymphoma Marker) Antibody - With BSA and Azide is for research use only and not for use in diagnostic or therapeutic procedures.

CD5 (Mantle Cell Lymphoma Marker) Antibody - With BSA and Azide - Protein Information**Name** CD5**Synonyms** LEU1**Function**

Lymphoid-specific receptor expressed by all T-cells and in a subset of B-cells known as B1a cells.

Plays a role in the regulation of TCR and BCR signaling, thymocyte selection, T-cell effector differentiation and immune tolerance. Acts by interacting with several ligands expressed on B-cells such as CD5L or CD72 and thereby plays an important role in contact-mediated, T-dependent B-cell activation and in the maintenance of regulatory T and B-cell homeostasis. Functions as a negative regulator of TCR signaling during thymocyte development by associating with several signaling proteins including LCK, CD3Z chain, PI3K or CBL (PubMed:1384049, PubMed:1385158). Mechanistically, co- engagement of CD3 with CD5 enhances phosphorylated CBL recruitment leading to increased VAV1 phosphorylation and degradation (PubMed:23376399). Modulates B-cell biology through ERK1/2 activation in a Ca(2+)-dependent pathway via the non-selective Ca(2+) channel TRPC1, leading to IL-10 production (PubMed:27499044).

Cellular Location

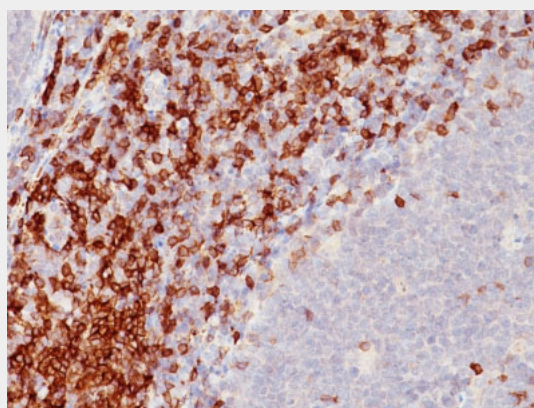
Cell membrane {ECO:0000250|UniProtKB:P13379}; Single-pass type I membrane protein {ECO:0000250|UniProtKB:P13379}

CD5 (Mantle Cell Lymphoma Marker) Antibody - With BSA and Azide - Protocols

Provided below are standard protocols that you may find useful for product applications.

- [Western Blot](#)
- [Blocking Peptides](#)
- [Dot Blot](#)
- [Immunohistochemistry](#)
- [Immunofluorescence](#)
- [Immunoprecipitation](#)
- [Flow Cytometry](#)
- [Cell Culture](#)

CD5 (Mantle Cell Lymphoma Marker) Antibody - With BSA and Azide - Images



Formalin-fixed, paraffin-embedded human Tonsil stained with CD5 Monoclonal Antibody (SPM546)

CD5 (Mantle Cell Lymphoma Marker) Antibody - With BSA and Azide - Background

Recognizes a 67kDa transmembrane protein, which is identified as CD5. The CD5 antigen is found on 95% of thymocytes and 72% of peripheral blood lymphocytes. In lymph nodes, the main reactivity is observed in T cell areas. Anti-CD5 is a pan T-cell marker that also reacts with a range of neoplastic B-cells, e.g. chronic lymphocytic leukemia/small lymphocytic lymphoma (CLL/SLL),

mantle cell lymphoma, and a subset (~10%) of diffuse large B-cell lymphoma. CD5 aberrant expression is useful in making a diagnosis of mature T-cell neoplasms. Anti-CD5 detection is diagnostic in CLL/SLL within a panel of other B-cell markers, especially one that includes anti-CD23. Anti-CD5 is also very useful in differentiating among mature small lymphoid cell malignancies. In addition, anti-CD5 can be used in distinguishing thymic carcinoma (+) from thymoma (-). Anti-CD5 does not react with granulocytes or monocytes.

CD5 (Mantle Cell Lymphoma Marker) Antibody - With BSA and Azide - References

Ferry JA et. al. American Journal of Clinical Pathology, 1996, 105(1):31-7. | Gagnet D et. al. Diagnostic Cytopathology, 1996, 14(1):32-7